

REDEFINING TECHNOLOGY IN EVERY PIXEL



## COMPANY PROFILE 2025





---

# Leaders in Commercial LED Screens, Digital Displays & Signage Solutions

**VuePix Infiled is the market leader in commercial LED display technology.**

We offer an extensive range of high quality LED screens, LCD displays, customised digital visual solutions & advanced software systems, designed for your specific requirements.

Through our collaboration with leading architects, integration partners and industry experts, we deliver and implement cutting edge digital visual solutions, tailored to exceed your expectations.

## Our Vision

**To provide world-class digital display technology, transforming environments into interactive experiences, energising spaces and entertaining audiences.**





---

# Why Choose VuePix Infiled



## Award Winning Technology

Our innovative technology and bespoke projects have been recognized and awarded by the leading industry experts. We pride ourselves in delivering cutting edge technology solutions for iconic projects across all market segments.



## Precision Manufacturing

We manufacture at our own state of the art facilities and operate at the highest standards, meeting ISO19001 quality certification and ISO14001 environmental certification.



## Full Product Customisation

We design and build custom made LED visual displays & systems to suit any space and application. Our teams help you to make a statement with your new digital display. The only limit is your imagination!



## Vast Industry Experience

With our extensive industry experience of over 15 years, we have been involved in many iconic digital projects around the globe. Our technology excels at some of the most challenging environments.



## Australian Owned

We are an Australian owned company with manufacturing facilities based in Shenzhen. All our products are designed and built to fully comply with the Australian & New Zealand standards.



## Strong Global Presence

VuePix Infiled global support network spans all across the World, providing our clients and partners first class customer service and support in over 100 countries.



## Local Teams of Experts

We have a network of dedicated professionals based in both Australia and New Zealand, supporting our clients, integrators, partners and projects locally.



LEASING NOW  
CBRE 125Q.CO.NZ



# QUEEN'S RISE

EST 1867



SWANSON

38

METRO  
SUPERMARKET



DOMI

---

# Our Manufacturing Facilities

VuePix Infiled's dedication to the industry is reflected through our investment into research, technology, manufacturing, equipment, engineering, software and most importantly, our people. We manufacture at our own state of the art facilities in Shenzhen with over 180,000sqm of manufacturing area and a production capacity of over 60,000sqm of LED panels per month.



**180,000sqm**  
MANUFACTURING AREA



**60,000sqm per month**  
LED SCREEN PRODUCED



**300+**  
LED DISPLAY PATENTS



**120 Billion**  
LED CHIPS USED



**800+**  
STAFF MEMBERS

## The Highest Standards

VuePix Infiled goes above and beyond to meet all required governmental policies worldwide, ensuring no matter where in the world we operate, it is of the highest standards.

Our operations meet ISO19001 Quality Management Certification, ISO14001 Environmental Certification and OHSAS18001 Occupational Health and Safety Certification.

Our stringent screening policy ensures all business partners we engage with operate within a common set of core values with regards to the environment and sustainable work practice.



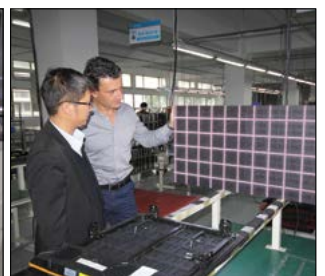
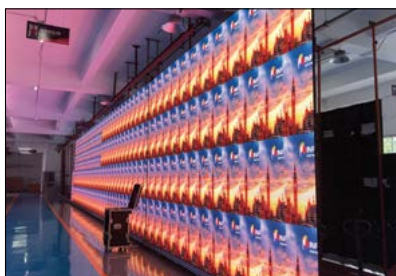
**ISO9001**  
CERTIFIED



**ISO14001**  
CERTIFIED



**OHS18001**  
CERTIFIED







VUEPIX  
INFILED

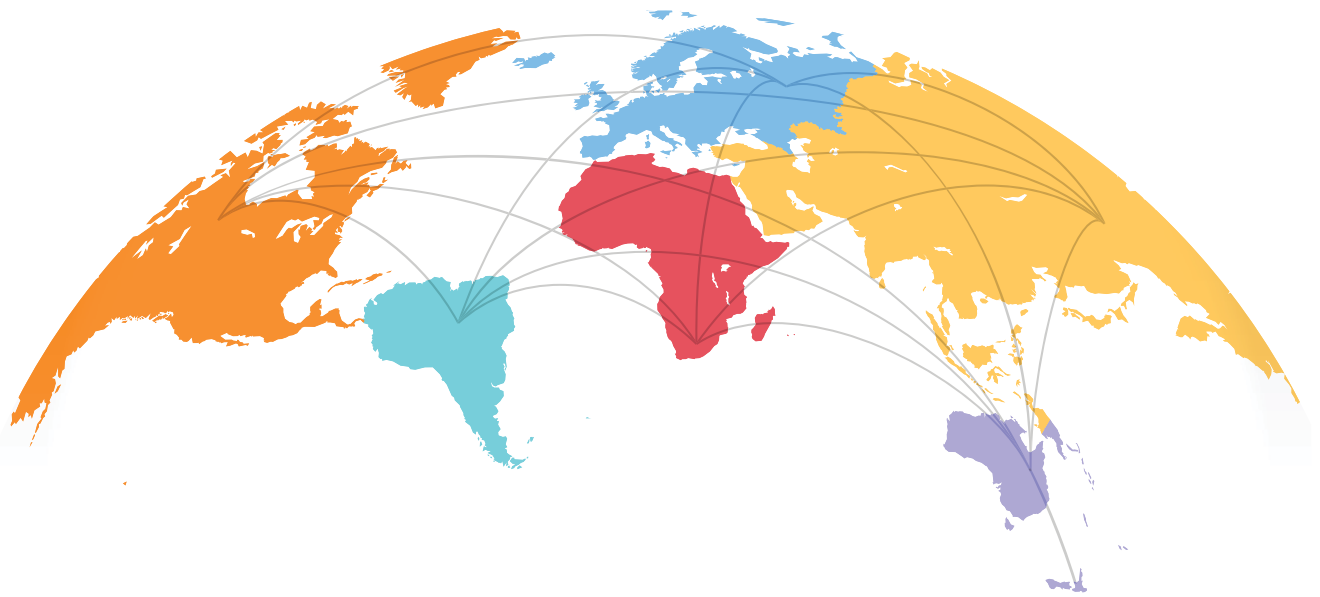


---

# Global Support Network

VuePix Infiled Global support network spans all across the World, providing our clients and partners with first class customer service and support in over 100 countries.

Europe | UK | Middle East | Australia | New Zealand | US | China | Japan  
Singapore | Malaysia | South Korea | South America



## Local Teams of Experts

### QUEENSLAND

2 Inventory Court  
Arundel QLD 4214

### VICTORIA

204 Turner Street  
Port Melbourne VIC 3207

### NEW SOUTH WALES

B1 / 366 Edgar Street  
Condell Park, NSW 2200

### SOUTH AUSTRALIA

10 William Street  
Mile End South SA 5031

### WESTERN AUSTRALIA

3 Michel Cres  
Gosnells WA 6110

### NEW ZEALAND

7A / 89 Ellice Road  
Wairau Valley AUK 0629





---

# Outstanding Service & Support

**When supplying world class visual solutions, it is paramount to provide outstanding service and support to back it up.**

VuePix Infiled has been built on the formation of successful relationships and our continued commitment to exceed our client's expectations is what sets us apart from the competition.

Our experienced teams together with our integration partners provide technical support throughout all stages of the process, from technology selection and customisation through to supply, installation and commissioning of your LED display project.

Together we continue providing support after the completion of the project to sustain maximum quality, performance and lifespan of the installed systems to ensure a great return on your investment. We offer and provide preventative maintenance programs and regular servicing tailored specifically for each project.







---

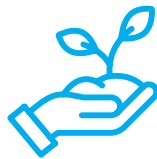
# Sustainability & our Commitment to Reducing the Environmental Footprint

At VuePix Infiled, we are fully committed to reducing our environmental footprint with the implementation of sustainability strategies and policies through all aspects of our operations.

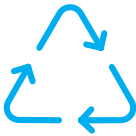
We understand the world for future generations should not be compromised by the actions we take today.



**ENVIRONMENTAL  
CERTIFICATION**



**ETHICAL SOURCING  
OF MATERIALS**



**RECYCLABLE  
PACKAGING**



**ECO WASTE  
MANAGEMENT**



**SEA FREIGHT PREFERRED  
METHOD OF SHIPPING**



**MADE  
FOR  
MORE**



---

# VuePix Infiled Has a Solution for Any Challenge

VuePix Infiled offers an extensive range of high quality LED screens, LCD displays, advanced software systems and customised digital visual solutions, designed for your specific requirements and built to exceed your expectations.

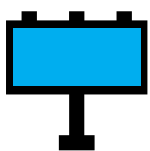
Our screens are tried and tested in almost every market and under almost every condition, from the top of high rise buildings, sports stadiums, billboards, shopfronts, concerts & stage shows, and everything in-between. Our digital displays can be found front and centre at the World's largest stages, at main international transportation hubs, shining bright at most of the major TV productions or delivering messages to millions throughout the series of digital billboards worldwide.

## Comprehensive Range to Meet your Specific Requirements

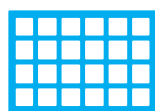
**We provide the ultimate technology solutions that are specifically designed and tailored to suit your environment.**

With our extensive industry experience, we understand that each client may have different expectations when it comes to digital technology solutions. Every specific environment also comes with its own challenges and requirements, that are unique and important to consider in different stages of the project.

Working closely with leading architects, designers and AV integrators, our teams make sure your digital systems are fit for purpose and designed to deliver superb performance, great ROI and exceed your expectations.



OUTDOOR MEDIA



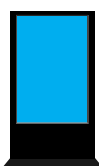
FIXED INSTALLATIONS



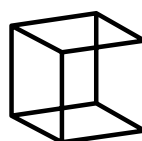
CURVED DISPLAYS



RENTAL & TOURING



DIGITAL STREET FURNITURE



CREATIVE DISPLAYS



MOBILE LED PLATFORMS

Ginias  
WINTER COLLECTION

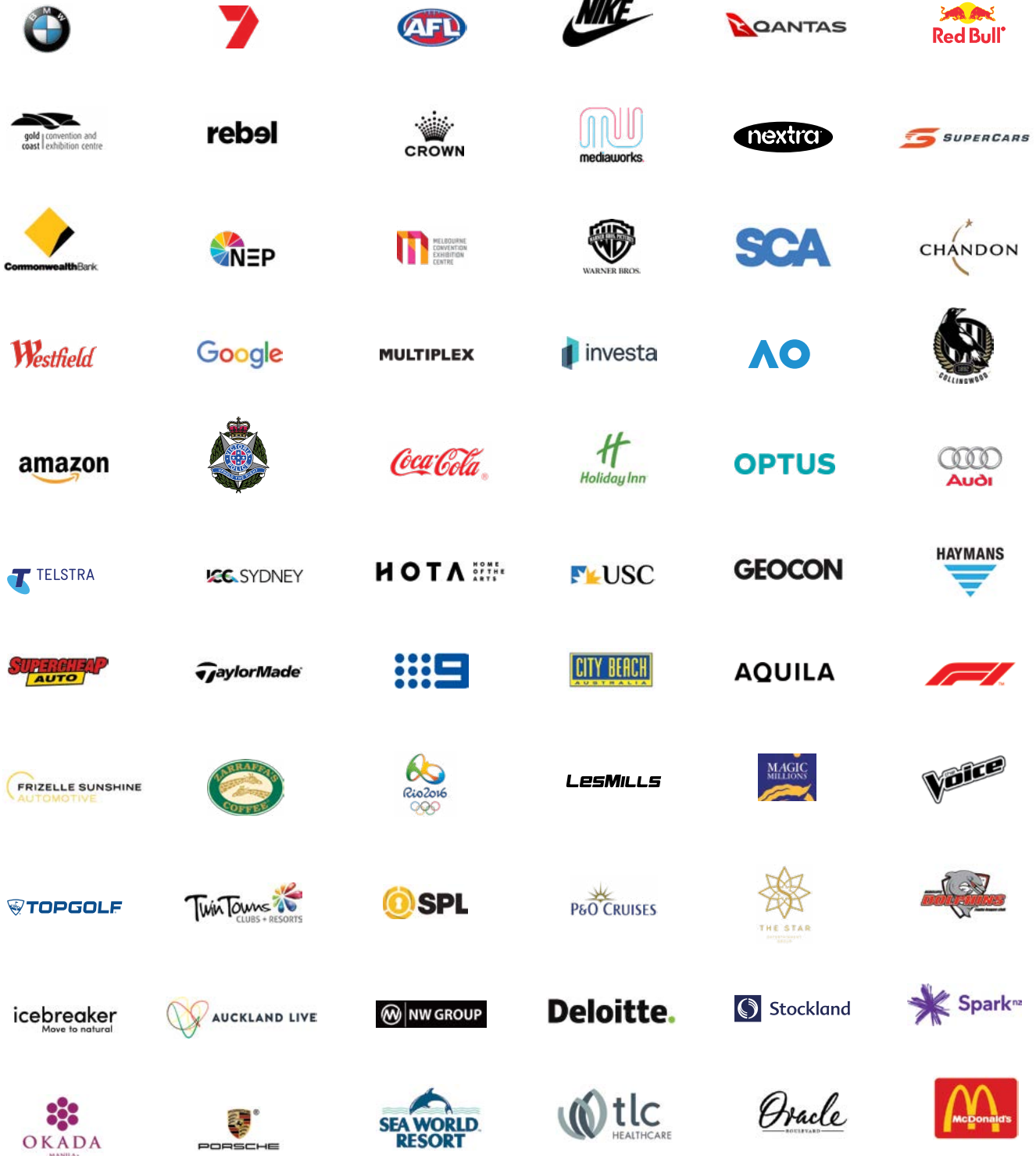




---

# Who Trusts in VuePix Infiled

Our reputation for professionalism and innovation has resulted in us working with some of the world's most influential companies and brands. We take great pride in forming and maintaining strong, successful relationships with every one of our valued clientele.



....and many more

**OUR FIELDS OF  
EXPERTISE.**



---

# Outdoor Digital Media

## Our Digital Technology Platforms Make Brands Unmissable!

We provide high quality, purpose built, IP65 rated LED screens & LCD displays, designed specifically for permanent fixed outdoor installations, offering the best balance between weight and durability.

- Exceptionally high brightness
- Delivering excellent visuals in any light condition
- Built to withstand outdoor elements
- Advanced content management system
- Patented real-time monitoring system
- Reliable technology with great ROI
- Local service & support teams
- Tailored maintenance programs



Frizelle Sunshine Automotive Group | Zarraffa's Coffee HQ | Melbourne Convention & Exhibition Centre | Warner Bros. Movie World  
Twin Towns Clubs & Resorts | The Oracle Boulevard | Queen's Rise | Mediaworks NZ | The Mark Retail Precinct | ASB Showgrounds  
Supercheap Auto | Stocklands Green Hills | SPL Locksmith | Coogee Beach Digital Kiosks | 100 Parnell Road | Home of the Arts  
Gold Coast Convention & Exhibition Centre ... [and many more](#)

---

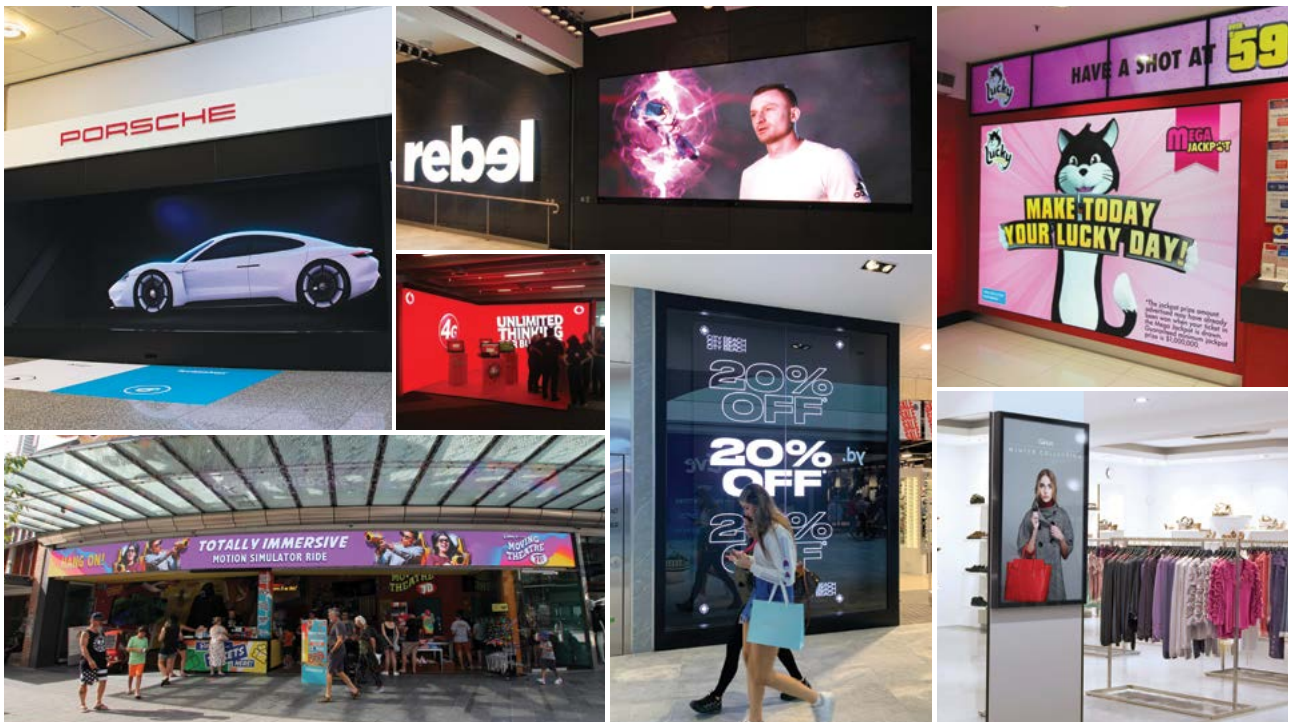
# Retail Environments

## Create a Statement, Attract Attention, Engage Your Customers!

Purposely designed for retail & commercial applications, our state-of-the-art seamless digital displays are perfectly suited to promote your business and to ensure prime viewing by your customers.

Our experienced teams work together with leading AV integrators in the retail sector, making sure each client receives the most reliable, cost-effective and complete digital display systems to fit their vision.

- Creative eye-catching digital displays
- Delivering vivid & dynamic content
- Designed to grab attention, engage & influence
- Highly customised solutions to fit your environment
- Flexible & user-friendly CMS
- Great ROI



Rebel Sport | Ice Breaker | Louis Vuitton | Porsche | Red Bull | Duty Free Auckland Airport | Volkswagen AG | ISUZU | Coca-Cola  
Topgolf | Telstra | Haymans Electrical | Aquila | Nextra | City Beach | Ripley's Believe it or Not! | Vodafone | Taylormade | Optus  
... and many more



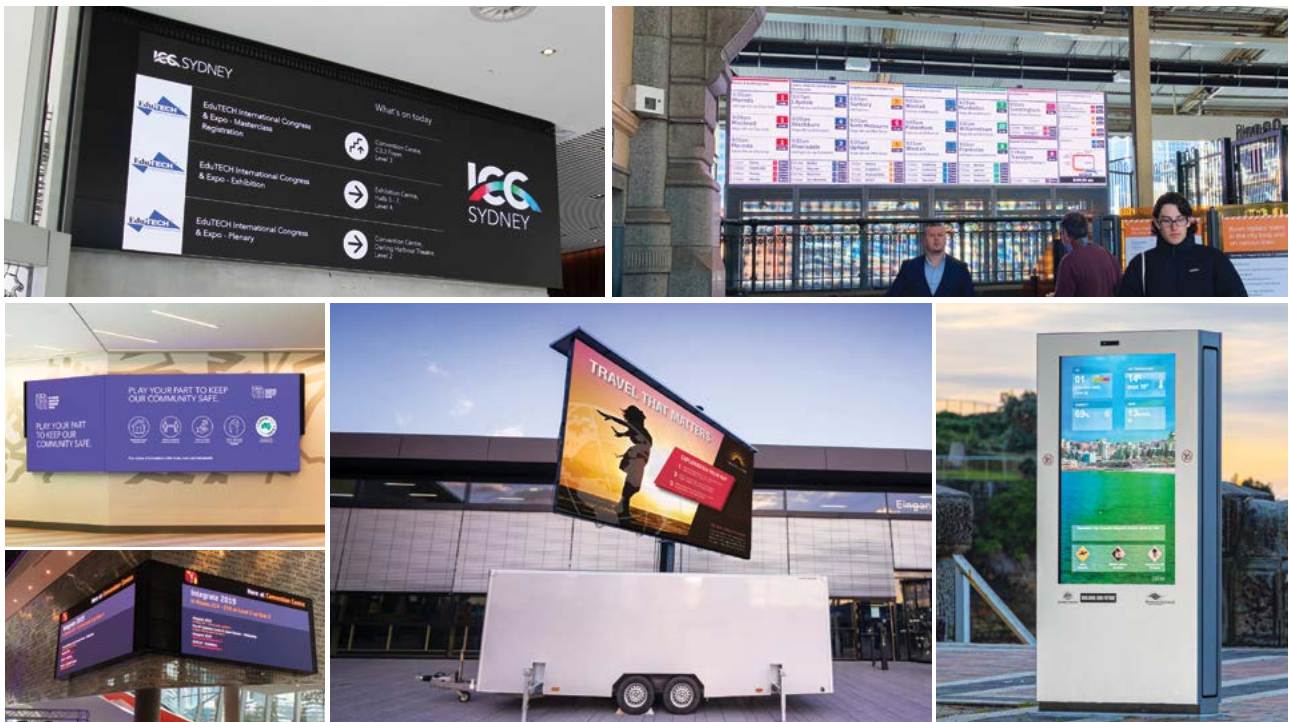
---

# Digital Signage Systems

## Reliable LED Screen Systems Designed for 24/7 Operation

VuePix Infiled offers reliable digital signage systems which are visually stunning, easy to operate and tailored to suit your environment. Our qualified teams of technicians work closely with architects & AV integrators, making sure that our technology solutions comply with all the requirements and safety regulations specific to the location. This ensures that your message will be delivered clearly and efficiently.

- *Tailored technology solutions to suit your environment*
- *Reliable systems with dual redundancy*
- *Remote content management & display monitoring*
- *Durable mobile platforms built to withstand frequent transport*



ICC Sydney | Melbourne Convention & Exhibition Centre | Flinders Street Station | HOTA Cultural Precinct | Bristol Airport  
Coogee Beach Digital Kiosks | Mediaworks NZ Digital Kiosks | Wellington International Airport ... [and many more](#)

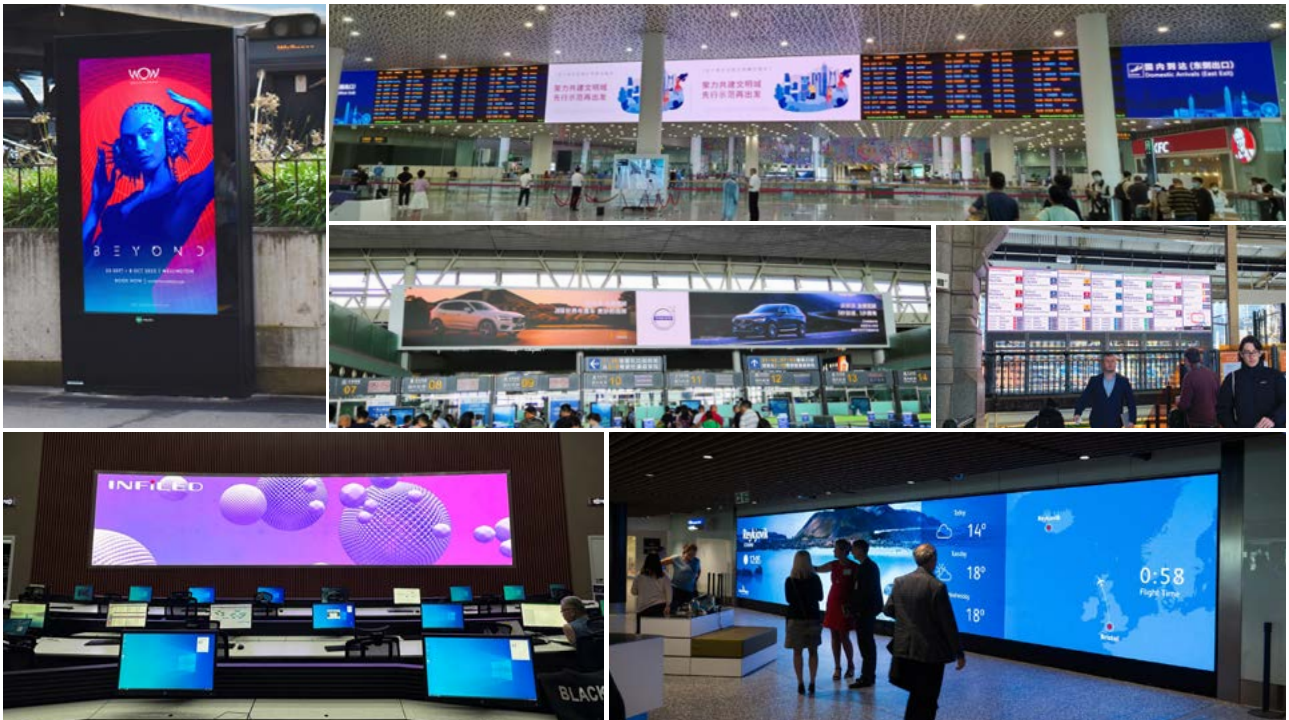
# Airports & Transportation Hubs

## Ultimate Technology Solutions to Guide Your Patrons

VuePix Infiled LED technology offers endless possibilities for creating dynamic visual solutions in any environment. Whether you're engaging potential clients, directing traffic, promoting products or services, or entertaining crowds, choosing an LED display system with high flexibility is essential.

We understand the need for technology that operates around the clock. That's why we work closely with top architects and AV integrators to deploy LED display solutions that are not only visually stunning and energy efficient, but also incorporate the latest processing systems. This ensures your message is delivered clearly and effectively, anytime and anywhere.

- *Reliable technology solutions with impressive ROI*
- *Engineered for 24/7 operation*
- *Advanced content management system*
- *Patented real-time monitoring system*
- *Local service and support teams*
- *Customised maintenance programs*



Flinders Street Station | Wellington International Airport | Bristol Airport | Frankfurt Airport  
Greater Wellington Train Network | Shenzhen International Airport | Chengdu International Airport  
... and many more



---

# Film, Broadcast & XR Production

## We Build LED Screens That Look Great on Camera

We design and deliver state-of-the-art digital platforms which produce the ultimate image quality for the most demanding environments. Catering specifically for all fine pixel pitch applications in film, broadcast & virtual studio environments, our LED displays utilise the latest processing systems. Ultra-low SCAN rate ensures a superb performance for professional camera systems. High quality Macroblock driver ICs delivers an exceptional refresh rate. Utilising exclusive black LEDs, full black frame & ultra-black masking materials, our VuePix Infiled digital displays provide a new level of contrast, superior image quality and picture depth.

- *Designed specifically for film, broadcast & virtual studios*
- *Utilising the latest processing systems*
- *Ultra-low SCAN rate & exceptional refresh rate*
- *Reliable systems with dual power & signal redundancy*



Channel 9 Swimming Trials 2024 | Channel 7 Rio 2016 Olympic Studio | Brownlow Medal | The Voice | Big Brother | ARIA Awards  
X Factor Australia | Scene Change Virtual Studios | NZ Video Music Awards | Samsung Galaxy Live | Moto Group Virtual Studio  
Victoria Police Media Centre | Kōawa Creative Technology Precinct ... [and many more](#)

# Sport, Stadium & Entertainment Precincts

## Engage Fans in a Whole New Game Experience!

Harness the energy of the crowd and create an atmosphere that brings fans to their feet, Our teams of experts have delivered all sorts of advanced digital LED platforms for iconic stadiums, arenas & sporting facilities around the globe. Our digital technology allows you to surround your fans with constant simulation and create the ultimate thrilling environment. We work closely with venue management, technical staff & event organisers to design customised digital platforms, which are built to specific industry standards.

**We supply Scoreboards, Video Walls, Perimeter Signage, Digital Information Systems and Digital Advertising Platforms for all kinds of different sports and environments:**



Redcliffe Dolphins Arena | O'Brien Icehouse | Lulea Ice Hockey Stadium | UEFA Euro 2016 Soccer Championship  
Channel 9 Swimming Trials | 2024 Toowoomba Sports Ground | Elite Football Training Facilities | Rio 2016 Olympic Studio  
Magic Millions | Topgolf Gold Coast | Etihad Stadium | Red Bull Cup | Australian Open | Formula 1 French Grand Prix  
Esports Stadium Arlington | USC Netball Stadium AAMI Park Melbourne | Southport Sharks | West Coast Eagles ... [and many more](#)



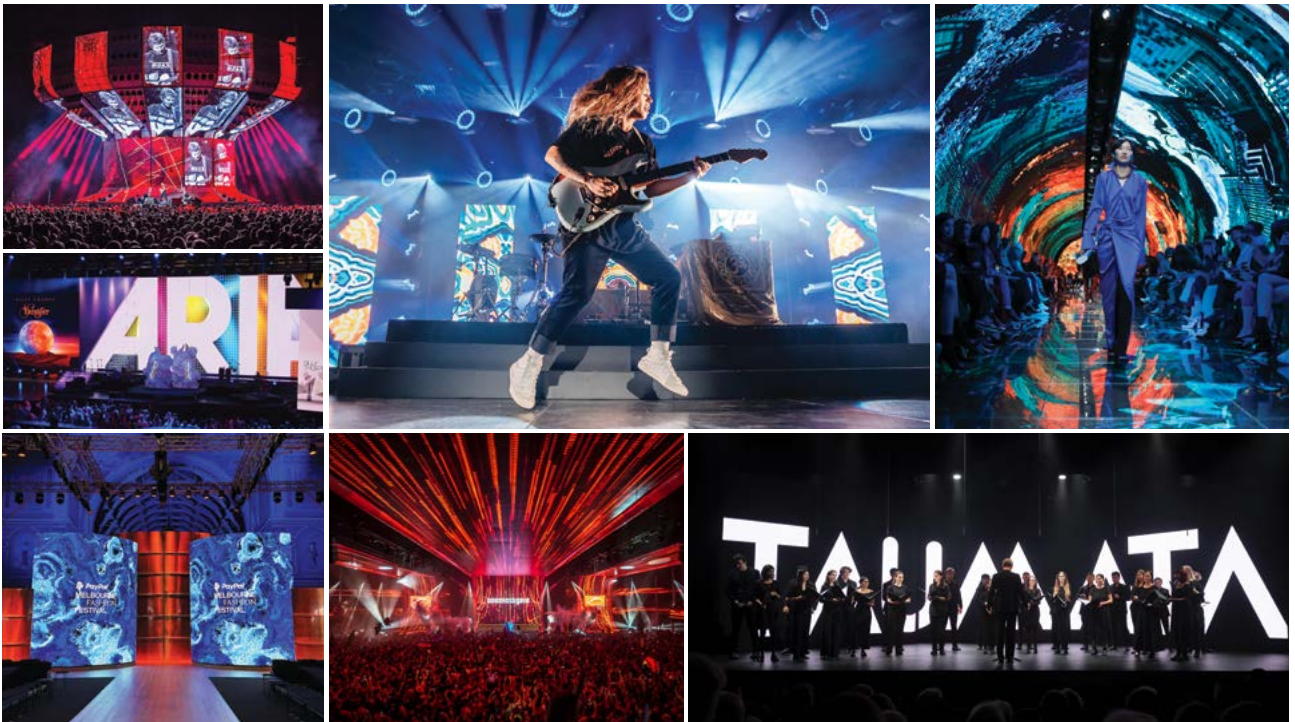
---

# Live Production

## Our LED Screens Provide You With Infinite Creative Possibilities for Your Stage

We offer cutting-edge LED touring systems, featuring high-brightness LEDs, producing stunning visuals in any light conditions, even under the direct sun. The VuePix Infiled panels are remarkably strong and robust, but also extremely lightweight. The cabinets feature intuitive locking systems, ergonomic handles and other advanced features, which assist in rapid installation. Our advanced touring panels are equipped with an in-built angling system, allowing displays to be set up as flat or curved screens, convex or concave, in different angle options. Most of our systems offer both front and rear service and easy maintenance access.

We have a great understanding of the time restraints for installation and transportation of stage sets. We offer dedicated transportation systems to allow for easy transportation and to make the installation process super-efficient.



Tomorrowland | Red Bull Cup | Esports Arena | Tash Sultana Tour | Cisco Live | BMW Exhibition Hall | Spilt Milk | Keith Urban Tour  
UEFA Euro Championship | David Guetta | State of Origin | Qantas Gala Ball | Justin Bieber | Paris Fashion Week | FashFest  
Rihanna & Chris Brown Tour | Australian NFF Congress | Pope Francis Mass | Pink Floyd | Katy Perry Tour | V8 Supercars  
Formula 1 French Grand Prix | Balenciaga Runway Show | Paul Van Dyk Reed Gift Fairs | Nando's National Conference  
Migration Settlement Awards | Summer Session Festival | Guy Sebastian Tour | Prime Minister's Awards | Stereosonic  
Future Music Festival | TAUMATA | Melbourne Fashion Festival ... and many more

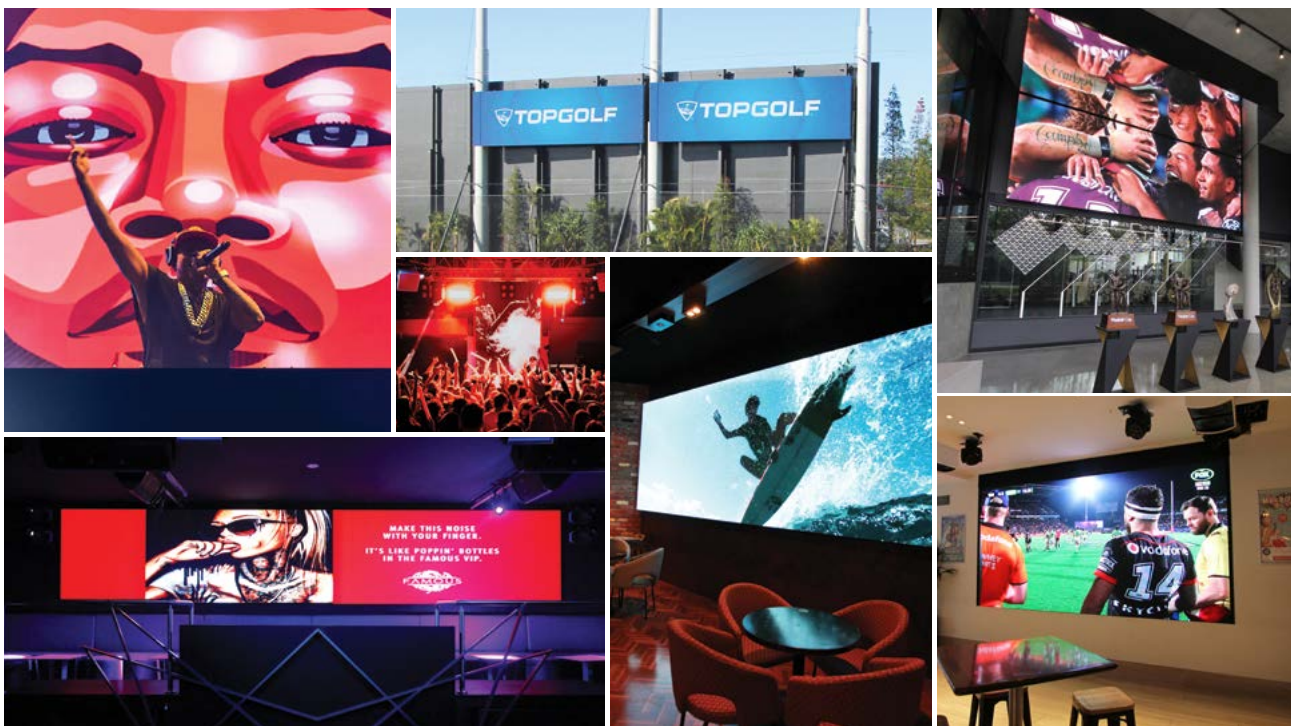
---

# Event & Hospitality Venues

## Bring Your Venue to Life With our Engaging Digital Displays!

Our experienced teams have worked within high profile venues across the world, as well as with local business operators, creating customised LED displays, designed to immerse the guests in an atmosphere that is exciting and dynamic. We offer quality, reliability and a personal approach. We make sure our products are fit for purpose and designed to deliver a great performance to entertain your guests each and every time.

- *Multipurpose digital displays*
- *High level of customisation*
- *User-friendly content management system*
- *Local teams of experts for technical support*
- *Energy efficient & environmentally friendly*



Okada Integrated Resort | Cali Beach | Topgolf | Club Central Hurstville | Melbas on the Park | Holiday Inn | Famous Club  
Twin Towns Clubs & Resorts | FCTN Club | The Rockhampton Leagues Club | Marquee - The Star | Southport Sharks  
P&O Cruises Fleet | Brisbane Broncos Leagues Club | O'Brien Icehouse | 1st on Wharf Tavern | Redcliffe Leagues Club  
Blacktown Workers Sports Club... and many more



# Convention & Exhibition Centres

## Our Digital Technology Platforms Provide High Flexibility for Dynamic Environments

Our team has extensive experience in delivering high profile exhibitions, conferences, and signature events. Working together with leading convention & exhibition centres, we understand the importance of delivering the right technology solutions, that will allow you to deploy a variety of unique setups and different looks for each and every client.

By selecting our cutting-edge digital technology, paired with the latest processing systems, you are providing your team with highly flexible tools to stay ahead of the game, creating mind-blowing globally recognised events.



AOTEA Centre Auckland | ICC Sydney | Melbourne Convention & Exhibition Centre | Gold Coast Convention & Exhibition Centre  
Auckland Live Digital Stage | Adelaide Convention Centre | Brisbane Convention & Exhibition Centre | Auckland Showgrounds  
Brisbane Showgrounds | Gladstone Entertainment Convention Centre | Cairns Convention Centre... [and many more](#)

---

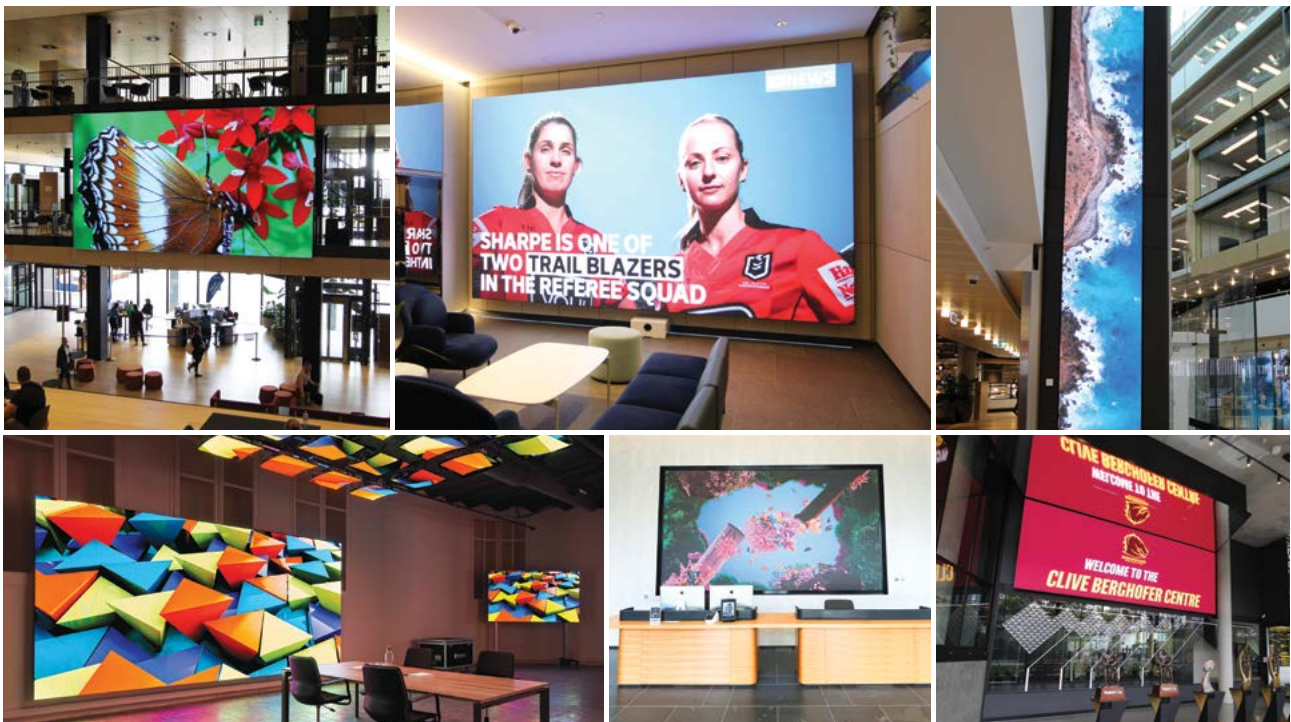
# Corporate Environments

## Turn Your Corporate Environment into a Place of Creativity!

We work together with experienced AV integrators to deliver full turnkey digital display solutions. With the highest quality LED components that deliver superior image quality, our LED systems are ready to transform any surface into a striking digital canvas.

Our experienced teams will guide you throughout the whole process, helping you to select the best solution in accordance to your requirements and budgets. Our digital display systems are user-friendly, energy efficient, designed as plug-and-play, and will work with your preferred platform content management system.

- Full turnkey technology solutions
- Delivering superior visual performance
- Non-intrusive mounting systems
- High level of customisation
- Designed as plug-and-play
- Tailored SLA agreements



Investa Property Group | Commonwealth Bank HQ | 339 Coronation Drive | Broncos Leagues Club | Inglis Riverstage Stables  
Les Mills HQ | Domaine Chandon | The Rise – USC | Holiday Inn | Victoria Police HQ | Geocon Property Developers | Volkswagen HQ  
Facebook HQ | Spark HQ | QT Hotel Canberra | Jubilee Place... [and many more](#)



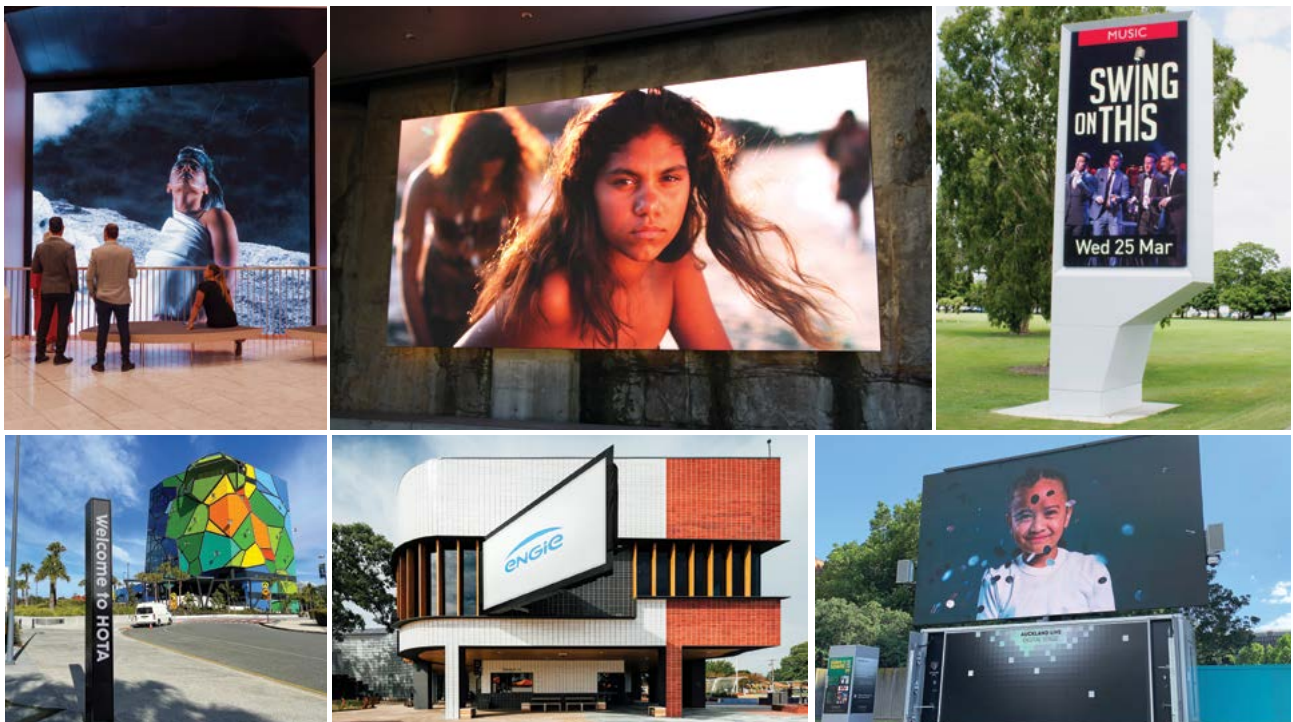
---

# Arts, Education & Community

## Transform Any Space into a Creative & Engaging Environment!

Our experienced teams work with leading designers, architects and AV integrators, together transforming classrooms, libraries, lecture halls, auditoriums, common areas and outdoor spaces into dynamic and inspiring interactive environments.

Offering a full range of innovative digital displays in any size, shape or curve to fit your space, both outdoor and indoor. We design and deliver LED systems which are lightweight, energy efficient, simple to install and easy to maintain and operate. Our advanced and user-friendly content management platforms allow information and imagery to be updated in real time. We work with you to incorporate the latest visual technology into your environment, making sure that our systems are fit for purpose and deliver the desired outcome, whether it is education, entertainment, information, or all of those at different times.



Barangaroo Reserve | AOTEA Centre | HOTA Cultural Precinct | Springvale Urban Screen | Glow Church | Geelong Arts Centre  
Auckland Live Digital Stage | Tarneit Rise Primary School | USC Moreton Bay Campus | Metro Church | Emmaus College  
Geelong Arts Centre | University of Canterbury... [and many more](#)

---

# Creative Applications

## Create a Statement With Our Bespoke Digital Solutions!

Creating unique, bespoke LED solutions designed specifically for your application is one of the main features that sets VuePix Infiled apart from the rest. Our experienced teams work together with leading designers and engineers to specify, design and build your unique LED display, which will make a strong visual impact to the audience. From high transparency displays catering to outdoor media facades, designer displays of irregular shapes, soft flexible modules for creative installations, to interactive media displays with in-built motion sensors allowing responsive content to be shown. The latest LED technology we work with allows us to create ultra-slim and super light-weight displays, which can be seamlessly attached to any structure or surface, totally integrated with the building. Shining bright when powered on, yet very classy and discreet when it needs to be.

We enjoy pushing the boundaries and redefining the possibilities of the digital landscape with our bespoke LED solutions. The only limit is your imagination!



Australian Open | Warner Bros. Movie World | CBA Headquarters | Paris Fashion Week | Foundry Tunnel | Lendlease  
Big Brother Australia | OPTUS Store | Joker Face | Green Lantern | Sea World Resorts ... [and many more](#)









**REDEFINING TECHNOLOGY IN EVERY PIXEL**

**Contact our VuePix Infiled experts to discuss your next project**

**Australia: 1800 883 749 New Zealand: 09 218 6532 International: +61 7 5509 4633**

**info@vuepix.com | [vuepix.com](https://vuepix.com)**